



**Trust in SHL**



**SHL<sup>®</sup> ASEAN**  
LUBRICANTS

Đại lý Ủy quyền phân phối tại Việt Nam

**CÔNG TY CỔ PHẦN THƯƠNG MẠI VẬN TẢI DẦU KHÍ HẢI ÂU**

Địa chỉ: Số 19/92 đường Chùa Vẽ, P. Đông Hải 2, Q. Hải An, TP. Hải Phòng

MST: 0201851113



**SPTC<sup>®</sup>**

**DẦU NHỚT**  
**HÀNG HẢI - CÔNG NGHIỆP - VẬN TẢI**

<https://sptc.com.vn>

Hotline: 0911.1616.38

Công ty TNHH SHL là tên mới của Công ty TNHH Samhwa Lube Oil, là một công ty luôn giữ được niềm tự hào trong ngành công nghiệp dầu nhờn Hàn Quốc trong suốt hơn 50 năm qua.

“SHL” là sự kế thừa và phát triển của “Samhwa Lubricants” [Công ty TNHH Samhwa Lube Oil] có triết lý kinh doanh của sự cân bằng hài hòa và hòa hợp trong 3 yếu tố của vũ trụ: “TRỜI, NGƯỜI, ĐẤT”

Logo của công ty SHL là biểu tượng ngón tay lời hứa cam kết và cũng là sự tiến bộ của ba thành phần. “Màu xanh” của SHL là thể hiện cho cộng đồng xã hội, mối quan hệ tự nhiên và trung tâm con người.

“SHL Co., Ltd” is the new name of “Samhwa Lube Oil Co., Ltd” which has kept the pride in Korea’s lubricants industry over the last 50 years.

“SHL” means succession and development of “Samhwa Lubricants” [Samhwa Lube Oil Co., Ltd] having its business philosophy of harmonious balance and harmony in to three words: “SKY, HUMAN, LAND”

The logo of SHL symbolizes the finger of commitment also of the progress of Three Words. The green color of SHL expresses the social publicness, a natural affinity and human centrality.

“Tin vào SHL” là lời hứa hẹn và cam kết của SHL sẽ mang lại niềm tự hào và tự tin cho khách hàng.

SHL cam kết mang tới cho khách hàng niềm tin và sẵn sàng đổi mới. SHL sẽ nỗ lực hết mình để khiến khách hàng: tin vào sản phẩm, tin vào dịch vụ và niềm tin vào đối tác. Hãy tin vào SHL!

“Trust in SHL” is a promise and commitment to SHL and will give the pride and confidence to customers.

SHL is committed to offer the promise to our customers to give trust and willing to innovation. SHL will do our best to make customer: trust in product, trust in service and trust in partner.

**TRUST IN SHL!**



## ◆ TỔNG QUAN | OVERVIEW

Công ty TNHH SHL là công ty đại diện cho ngành công nghiệp dầu nhờn Hàn Quốc trong suốt 50 năm qua.

Để cung cấp các sản phẩm chất lượng cao ở Việt Nam và các nước ASEAN, Công ty TNHH SHL ASEAN chính thức được thành lập ngày 28 tháng 2 năm 2017 nhằm đáp ứng mọi nhu cầu của khách hàng.

SHL Co., Ltd has been representative company in Korean lubricants industry for 50 years. To provide high quality products for customers, SHL ASEAN was officially established on February 28, 2017 to meet the needs of customers in Vietnam and ASEAN countries.

**Người đại diện | Representative: Mr Bang Suk Hyun**

### **Nhà máy**

KCN Mỹ Xuân B1 – Conac, Phường Mỹ Xuân, Thị xã Phú Mỹ, Tỉnh Bà Rịa – Vũng Tàu

### **Factory**

My Xuan B1- Conac Industrial Zone, My Xuan Ward, Phu My Town, Ba Ria – Vung Tau Province, Vietnam.

Hotline: Mr. Lim Hyung Jik – 0906 545 151/ Ms. Huyền – 0974 714 641

### **Văn phòng đại diện Hồ Chí Minh**

Phòng B.8-25, Lầu 8, Block B, Sunrise Cityview, 33 Nguyễn Hữu Thọ, Phường Tân Hưng, Quận 7, Thành Phố Hồ Chí Minh.

### **Ho Chi Minh Representation Office**

Room B.8-25, Floor 8, Block B, Sunrise Cityview, 33 Nguyen Huu Tho, Tan Hung Ward, District 7, Ho Chi Minh City.

### **Văn phòng đại diện Hà Nội**

Tầng 4, tòa Nhà B2 - 10 Khu Vinhomes Gardenia, Phường Cầu Diễn, Quận Nam Từ Liêm, Thành phố Hà Nội

### **Ha Noi Representation Office**

4th Floor, Building B2 - 10 Vinhomes Gardenia Area, Cau Dien Ward, Nam Tu Liem District, Hanoi City

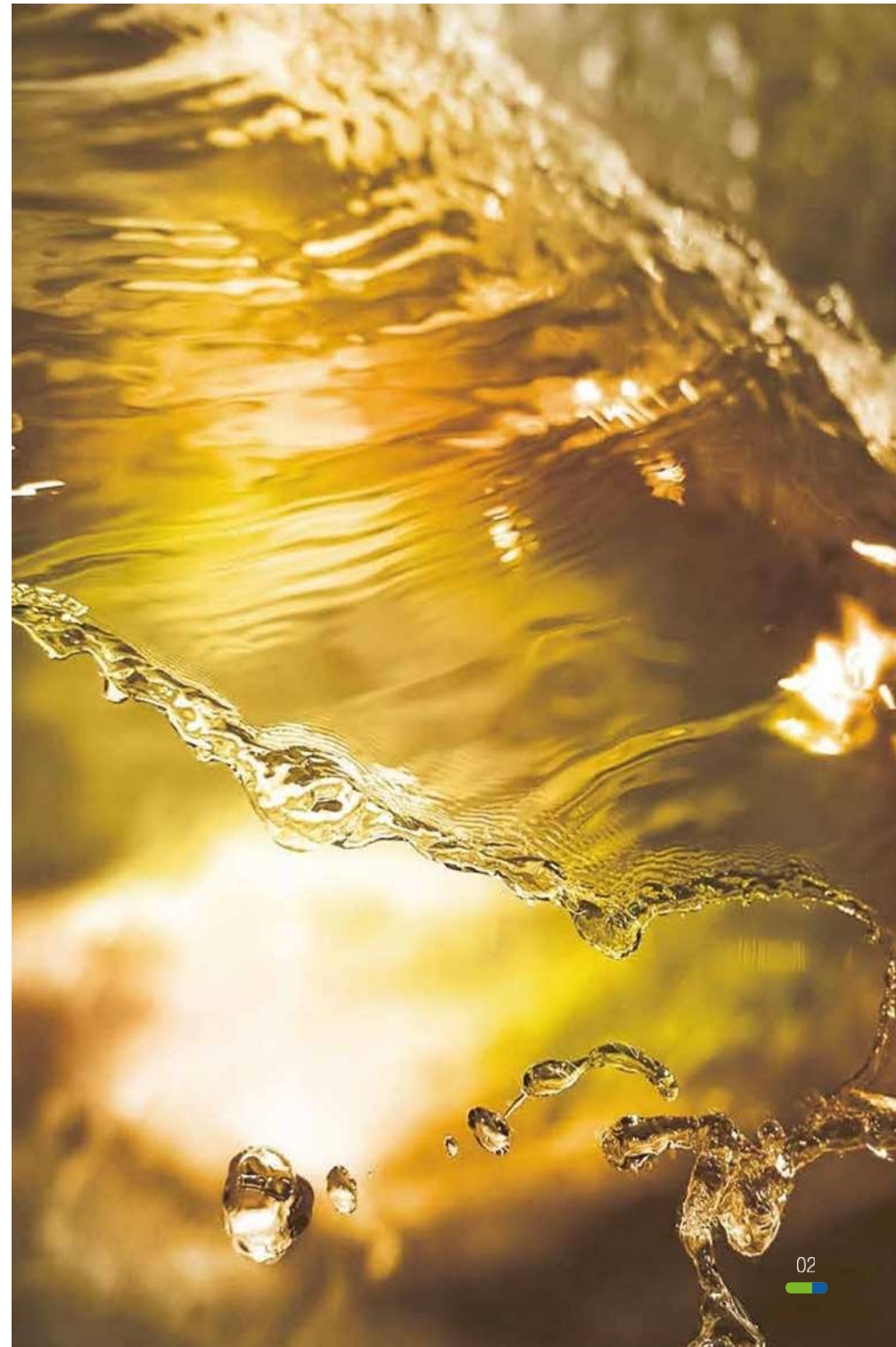
Hotline: Mr. Lee Seung Won - 0902 645 531

### **Văn phòng đại diện Hưng Yên**

KCN Dệt May Phố Nối B, Xã Dị Sử, Huyện Mỹ Hào, Tỉnh Hưng Yên

### **Hung Yen Representation Office**

Det May Pho Noi B Industrial Zone, Di Su Commune, My Hao District, Hung Yen Province



## ◆ SẢN PHẨM | PRODUCTS

### I. DẦU CẮT GỌT KIM LOẠI (Cutting Oils)

01. DẦU CẮT GỌT PHA NƯỚC (Water based Cutting Oils)
02. DẦU CẮT GỌT KHÔNG PHA NƯỚC (Neat Cutting Oils)

### II. DẦU ĐỊNH HÌNH (Drawing Oils)

### III. DẦU CHỐNG GỈ (Rust Preventives)

01. DẦU CHỐNG GỈ KHÔNG PHA NƯỚC (Oil Based Rust Preventives)
02. DẦU CHỐNG GỈ PHA NƯỚC (Water Based Rust Preventives)

### IV. DẦU NHIỆT LUYỆN (Heat Treatment Oils)

### V. DẦU TẨY RỬA (Cleaning Oils)

01. DẦU TẨY RỬA PHA NƯỚC (Water Soluble Cleaning Oils)
02. DẦU TẨY RỬA KHÔNG PHA NƯỚC (Neat Cleaning Oils)

### VI. DẦU BÔI TRƠN CÔNG NGHIỆP (Industrial Oils)

01. DẦU THUY LỰC (Power Oils)
02. DẦU BÁNH RĂNG/ DẦU MÁY/ DẦU RĂNG TRƯỢT (Gear/ Machine/ Slide Way Oils)
03. DẦU TRỤC QUAY/ DẦU MÁY NÉN KHÍ (Spindle/ Compressor Oils)
04. DẦU TRUYỀN NHIỆT (Heat Transfer Oils)
05. DẦU TUABIN (Turbin Oils)

### VII. DẦU CÁN (Rolling Oils)

### VIII. DẦU ĐỘNG CƠ (Engine Oils)

### IX. DẦU CẦU (Transmission Oils)

### X. DẦU TÁCH KHUÔN (Mold Release Oils)



# I. DẦU CẮT GỌT KIM LOẠI (Cutting Oils)

## 01. DẦU CẮT GỌT PHA NƯỚC (Water-based Cutting Oils)

	Products	pH	Factor	Rust prevention	Lubricity	Hard water stability	Steel Alloys	Aluminum	Copper/ Zinc Alloys	Ti / Stainless Steel	Application process	Main customer
Emulsion Type Oils	SHL SAMSOL T1	10.0	1.10	No Rust	★★★★	√	√				M	SeAH Steel
	SHL SAMSOL EF 150H	9.9	1.15	No Rust	★★★★		√				M	
	SHL SAMSOL EF 100H	9.9	1.22	No Rust	★★★★	√	√				M	
	SHL SAMSOL E1H	10.0	1.05	No Rust	★★★★		√				M	
	SHL SAMSOL 2000E	9.9	1.20	No Rust	★★★★	√	√				M	
	SHL SAMSOL EF 100HM	9.9	1.19	No Rust	★★★★	√	√				M	
	SHL SAMSOL E1	10.2	1.22	No Rust	★★★★	√	√				M	
	SHL SAMSOL A7H	9.3	1.15	No Rust	★★★★★	√		√		√	M	Airbus approval
	SHL SAMSOL F12	9.4	1.21	No Rust	★★★★	√	√	√			M, G	
	SHL SAMSOL F14	9.6	1.19	No Rust	★★★★	√	√	√			M, G	
Micro-emulsion Type Oils	SHL SAMSOL KF-550E	9.9	1.65	No Rust	★★★★		√				M, G	
	SHL SAMSOL K7E	9.6	1.43	No Rust	★★★★	√	√	√	√		M	
	SHL SAMSOL EA 650F	9.4	1.41	No Rust	★★★★		√	√				
	SHL SAMSOL 3000S	9.2	1.38	No Rust	★★★★			√				SAMSUNG Electronics
Semi-synthetic Type oils	SHL SAMSOL S-1000A	9.0	1.61	No Rust	★★★★★	√		√			M, G	
	SHL SAMSOL KF-3HV	9.9	3.15	No Rust	★★★★	√	√				M, G	
	SHL SAMSOL KF-3A	9.1	3.26	No Rust	★★★★	√	√	√			M, G	
Synthetic Type Oils	SHL SAMSOL SBC-2	10.0	3.15	No Rust	★	√	√				G	
	SHL SAMSOL S-401G	7.9	3.15	No Rust	★★	√	√				M, G	JNTC
	SHL SAMSOL S-701V	7.6	1.80	No Rust	★★★★	√		√			M	
	SHL SAMSOL S-33B	9.4	2.63	No Rust	★★★★	√						

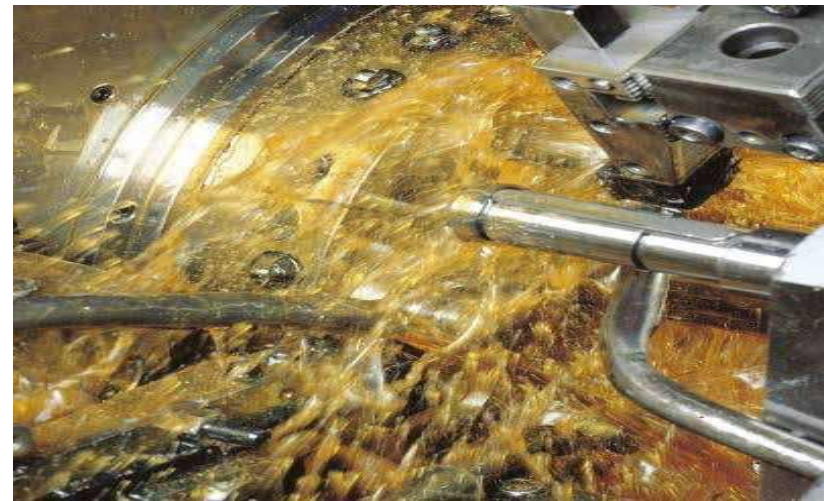
Note: M(Machining), G(Grinding)



## I. DẦU CẮT GỌT KIM LOẠI (Cutting Oils)

### 02. DẦU CẮT GỌT KHÔNG PHA NƯỚC (Neat Cutting Oils)

	Products	Chlorine	Specific gravity	Kinematic viscosity (40°C, cSt)	Flash point (°C)	Copper Corrosion	Lubricity (Wear & EP)	Steel Alloys	Aluminum	Copper / Zinc Alloys	Ti / SUS	Process	Main customer
Inactive Type Oils	SHL HONING 70	X	0.85	5	≥100	1	★	√				Honing	
	SHL SAMSTER T2600	X	0.90	24	≥250	1	★★★	√	√	√	√	MQL	
	SHL FOUNTCUT 60N3	X	0.87	12	≥150	1	★★		√	√		Cutting	
	SHL FOUNTCUT 2217	O	0.86	17	≥150	1	★★★	√				Hobbing	
	SHL FOUNTCUT 2221	O	0.86	21	≥150	1	★★★	√	√	√		Shaving	
	SHL FOUNTCUT 2228	O	0.92	28	≥150	1	★★★	√	√	√		Hobbing	
	SHL FOUNTCUT 15B3	X	0.88	15	≥150	2	★★★★	√	√	√	√	Cutting	
Active Type Oils	SHL FOUNTCUT 4213	O	0.91	13	≥150	4	★★★	√	√		√	Drilling	SeAH STEEL
	SHL FOUNTCUT 4525	X	0.88	25	≥150	4	★★★★				√	Tapping	
	SHL FOUNTCUT 300TB	O	0.92	28	≥150	3	★★★★				√	Tapping	
EDM Oils	SHL EDM 30	X	0.80	1.8	≥74	1	★		√			EDM Machine	
	SHL EDM 32	X	0.80	2	≥80	1	★		√			EDM Machine	
	SHL EDM 34	X	0.81	2.3	≥100	1	★		√			EDM Machine	



## II. DẦU ĐỊNH HÌNH (Drawing Oils)

	Products	Chlorine	Specific gravity	Kinematic viscosity (40°C, cSt)	Flash point (°C)	Copper Corrosion	Lubricity (Wear & EP)	Steel Alloys	Aluminum	Copper/Zinc Alloys	Ti / SUS	Main customer
Drawing & Press Oils	SHL DRAW 5L	O	0.90	5	≥50	1	★★★	√	√	√		
	SHL DRAW A020	X	0.86	39	≥200	1	★★★		√	√		
	SHL DRAW 307B	O	1.20	325	≥150	4	★★★	√			√	
	SHL DRAW 800AL	X	0.90	800	≥200	1	★★★		√	√		
	SHL DRAW 15KD	X	0.87	20	≥200	1	★★★		√			
	SHL PRESS 2046B	O	0.91	46	≥150	1	★★★	√		Conditional		
	SHL PRESS 150HA	O	1.11	164	≥150	1	★★★★	√			√	
Fin press Oils	SHL PUNCH H	X	0.77	1.5	≥50	1	★★	√	√	√		SAMSUNG Electronics
	SHL PUNCH H-1	X	0.77	1.3	≥36	1	★★	√	√	√		
	SHL PUNCH G010	X	0.76	1.3	≥36	1	★★	√	√	√		
	SHL PUNCH G020	X	0.76	1.3	≥40	1	★★	√	√	√		
	SHL PUNCH F1	X	0.77	1.6	≥ 50	1	★★	√	√	√		
	SHL PUNCH Q4T	X	0.77	1.4	≥60	1	★★★★	√	Conditional		√	
	SHL PUNCHING OIL M1	X	0.81	1.9	≥70	1	★★★★	√	Conditional		√	
	SHL PUNCH K9HS	X	0.78	1.8	≥50	1	★★★★	√	√	√		
Forming Oils	SHL HEADING L325	O	0.91	115	≥250	1	★★★	√			Conditional	KPF
	SHL HEADING PRO 6H	O	0.92	70	≥200	1	★★★★	√			Conditional	
Bolt Rolling	SHL THREAD-1	X	0.85	30	≥200	1	★★★	√			√	

### III. DẦU CHỐNG GỈ (Rust Preventives)

#### 01. DẦU CHỐNG GỈ KHÔNG PHA NƯỚC (Oil Based Rust Preventives)

	Products	Specific gravity	Kinematic viscosity (40°C, cSt)	Flash point (°C)	Prevention period	Alkali washability	Drying time (hr, 20°C)	Non-ferrous metal	Automotive parts	Pipe, bearing	Sintered metal	Main customer
KP-3	SHL SAMLEX 215D	0.82	2.4	≥75	1~3 month	Excellent	1		√			GM
	SHL SAMLEX PR10 LHSC	0.80	1.3	≥40	1~3 month	Normal	0.5~1				√	Halla Stackpole
	SHL SAMLEX 5060GD	0.79	1.6	≥45	2~4 month	Excellent	1	√	√	√		
	SHL SAMLEX 48M	0.82	2.5	≥80	3~6 month	Excellent	1~1.5		√	√		ILJINSTEEL
	SHL SAMLEX 4425V	0.81	2.3	≥40	1~3 month	Good	1~1.5	√	√	√		
	SHL SAMLEX 4825(N)	0.81	2.4	≥45	3~6 month	Normal	1~1.5	√	√			
	SHL SAMLEX 5025V	0.81	2.5	≥45	4~6 month	Good	1~2	√	√		√	
	SHL SAMLEX 5120K	0.82	3.2	≥45	6~8 month	Normal	1~2		√			
KP-9	SHL SAMLEX 13	0.87	13.8	≥150	1~3 month	Normal	1~2	√				
	SHL SAMLEX 8026	0.83	2.6	≥40	6~8 month	Normal	1~2	√	√		√	

#### 02. DẦU CHỐNG GỈ PHA NƯỚC (Water Based Rust Preventives)

	Products	pH	Rust prevention	Defoaming	Steel Alloys	How to use	Recommended conc(%)	Remarks
Organic Inhibitor	SHL SAMLEX WED 300K	10.0	★★★★	★★★★	√	Dipping	3~5	For Intermediate Process
	SHL SAMLEX WED 500K	10.1	★★★★	★★★★	√	Dipping	3~5	For Intermediate Process

### IV. DẦU NHIỆT LUYỆN (Heat Treatment Oils)

	Products	Kinematic viscosity (40°C, cSt)	Kinematic viscosity (100°C, cSt)	Flash Point (°C)	Modified Marquenching oil	Martemper oil	Vacuum quenching oil
Semi-Hot Type	SHL MARQUENCH 100	110	8	240	√		
	SHL MARQUENCH 150		14	250		√	
Cold Type	SHL QUENCH 100B	19		205		√	√



## V. DẦU TẮY RỬA (Cleaning Oils)

### 01. DẦU TẮY RỬA PHA NƯỚC (Water Soluble Cleaning Oils)

Products		pH	Washability	Chip Rust	Defoaming	Steel Alloys	Al/Cu	How to use	Use below 30°C	Use over 40°C	Main customer
Synthetic Types	SHL CLEAN GK	9.7	★★	★★★★	★★★★	√	Conditional	S	√	√	GM Korea
	SHL CLEAN 90E	9.4	★★★	★★★	★★★	√	Conditional	D, S		√	ZICO
Alkali Types	SHL CLEAN PS2000HD	11.0	★★★★	★★★	★★★	√	Conditional	D, U, S		√	Hyundai motors
	SHL CLEAN 100A	9.4	★★★★	★★★	★★★	√	√	D, U, S		√	
	SHL CLEAN 100E	10.4	★★★★	★★★	★★★	√	Conditional	D, U, S			

### 02. DẦU TẮY RỬA KHÔNG PHA NƯỚC (Neat Cleaning Oils)

Products		Saybolt color	Specific Gravity	Flash Point (°C)	Distillation (°C)	Fe	Al	Cu	How to use	Main customer
Naphthenic & Paraffinic types	SHL WHITE 150D	+30	0.77	≥30	150~170	√	√	√	D, U, S	
	SHL WHITE 200L	+30	0.78	≥40	160~190	√	√	√	D, U, S	NOVELIS
	SHL WHITE 200K	+30	0.79	≥40	170~200	√	√	√	D, U, S	
Iso Paraffinic types	SHL WHITE 200P	+30	0.76	≥50	180~200	√	√	√	D, U, S	ILJIN
Normal Paraffinic types	SHL WHITE 102ST	+30	0.74	≥50	185~200	√	√	√	D, U, S	
	SHL WHITE 123ST	+30	0.76	≥70	220~250	√	√	√	D, U, S	

Note: D(Dipping), U(Ultrasonic), S(Spray)



## VI. DẦU BÔI TRƠN CÔNG NGHIỆP (Industrial Oil)

### 01. DẦU THỦY LỰC (Power Oils)

	Products	ISO grade	Kinematic viscosity (40°C, cSt)	Viscosity Index	Pour point (°C)	Flash point (°C)	Nitrile rubber	Silicone Rubber	Polyurethane rubber	Effect on the metal	Remarks
Mineral Oil Types	SHL SYNTHDRO 32AW	ISO VG 32	32	105	-30	≥220	√		√	√	Excellent wear Resistant products
	SHL SYNTHDRO 46AW	ISO VG 46	46	108	-30	≥220	√		√	√	
	SHL SYNTHDRO 68AW	ISO VG 68	68	108	-30	≥220	√		√	√	
	SHL SYNTHDRO 46AF	ISO VG 46	46	105	-30	≥220	√		√	√	Zn-Free product
	SHL SYNTHDRO 68AF	ISO VG 68	68	108	-30	≥220	√		√	√	
	SHL SYNTHDRO 32HV	ISO VG 32	32	145	-40	≥220	√		√	√	High viscosity Index products
	SHL SYNTHDRO 46HV	ISO VG 46	46	145	-40	≥220	√		√	√	
	SHL SYNTHDRO 68HV	ISO VG 68	68	145	-40	≥220	√		√	√	
	SHL SYNTHDRO SPECIAL 32	ISO VG 32	32	122	-35	≥220	√		√	√	Group III Base Oil Excellent wear resistant products
	SHL SYNTHDRO SPECIAL 46	ISO VG 46	46	122	-35	≥220	√		√	√	
SHL SYNTHDRO SPECIAL 68	ISO VG 68	68	122	-35	≥220	√		√	√		
Polyo- lester Types	SHL SYNTHDRO FR46	ISO VG 46	46	180	-30	≥220	√	√	√	√	Fire Resistant products
	SHL SYNTHDRO FR68	ISO VG 68	68	180	-30	≥280	√	√	√	√	
	SHL SYNTHDRO FR100	ISO VG 100	100	200	-30	≥250	√	√	√	√	
Water- glycol Types	SHL SYNTHDRO FRW38	ISO VG 38	38	200	-45	Not measured	√				
	SHL SYNTHDRO FRW46	ISO VG 46	46	210	-45	Not measured	√				
	SHL SYNTHDRO FRW68	ISO VG 68	68	220	-45	Not measured	√				

## VI. DẦU BÔI TRƠN CÔNG NGHIỆP (Industrial Oil)

### 02. DẦU BÁNH RĂNG/ DẦU MÁY/ DẦU RÃNH TRƯỢT (Gear/ Machine/ Slide Way Oil)

	Products	ISO grade	Specific gravity	Kinematic viscosity (40°C, cSt)	Viscosity Index	Flash point (°C)	Pour point (°C)	Copper Corrosion (100oC, 1hr)	Anti-oxidation	Rust prevention	Anti-wear
Gear Oils	SHL GEAR 68	ISO VG 68	0.88	68	100	≥220	-25	1	★★	★★	★★
	SHL GEAR 100	ISO VG 100	0.88	100	100	≥220	-25	1	★★	★★	★★
	SHL GEAR 150	ISO VG 150	0.89	150	100	≥220	-23	1	★★	★★	★★
	SHL GEAR 220	ISO VG 220	0.89	220	100	≥220	-15	1	★★	★★	★★
	SHL GEAR 320	ISO VG 320	0.90	320	100	≥220	-15	1	★★	★★	★★
Machine Oils	SHL MACHINE 32	ISO VG 32	0.86	32	102	≥220	-15	1	★	★	★
	SHL MACHINE 46	ISO VG 46	0.87	46	103	≥220	-13	1	★	★	★
	SHL MACHINE 68	ISO VG 68	0.87	68	103	≥220	-13	1	★	★	★
Slide Way Oils	SHL SYNTHWAY 32M	ISO VG 32	0.87	32	112	≥220	-33	1	★★	★★	★★
	SHL SYNTHWAY 46M	ISO VG 46	0.87	46	110	≥220	-30	1	★★	★★	★★
	SHL SYNTHWAY 68M	ISO VG 68	0.87	68	105	≥220	-20	1	★★	★★	★★
	SHL SYNTHWAY 68 HEAVY	ISO VG 68	0.87	68	105	≥220	-20	1	★★★	★★	★★★



## VI. DẦU BÔI TRƠN CÔNG NGHIỆP (Industrial Oil)

### 03. DẦU TRỤC QUAY/ DẦU MÁY NÉN KHÍ (Spindle/ Compressor Oils)

Products		ISO grade	Specific gravity	Kinematic viscosity (40°C, cSt)	Flash point (°C)	RBOT (150°C/ min)	Screw Compressor	Machine tool
Spindle Oils	SHL SPINDLE V5	ISO VG 5	0.85	5	130			√
	SHL SPINDLE V10	ISO VG 10	0.87	10	150			√
	SHL SPINDLE V22	ISO VG 22	0.85	22	210			√
Compressor Oils	SHL COMPRESSOR 32N1	ISO VG 32	0.84	32	245	4000	√	
	SHL COMPRESSOR 46N1	ISO VG 46	0.85	46	255	2400	√	
	SHL COMPRESSOR 68N1	ISO VG 68	0.86	68	265	1600	√	

### 04. DẦU TRUYỀN NHIỆT (Heat Transfer Oil)

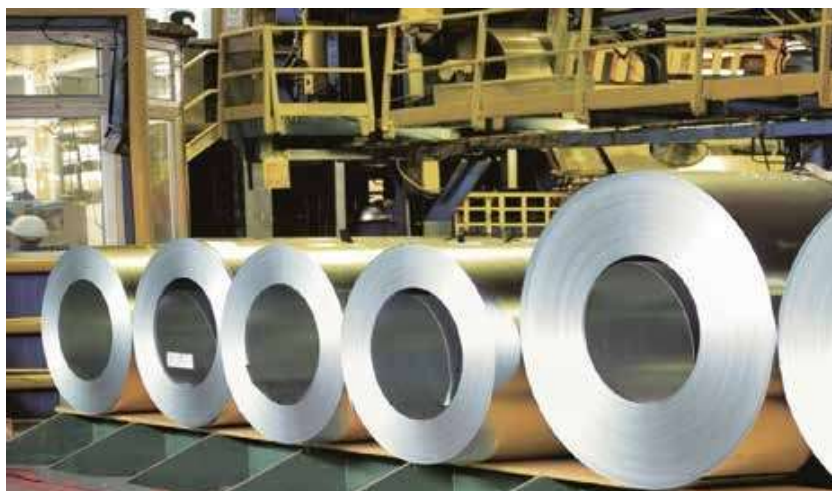
Products		ISO grade	Specific gravity	Kinematic viscosity (40°C, cSt)	Viscosity Index	Flash point (°C)	Auto-ignition Point (°C)	Pour point (°C)	Copper Corrosion (100°C, 1hr)	Anti-oxidation	Low Evaporative	High efficiency
Mineral Type Oils	SHL THERM 22	ISO VG 22	0.84	22	120	≥220	-	-21	1	√		
	SHL THERM 32	ISO VG 32	0.84	32	130	≥230	-	-18	1	√		
	SHL THERM 46	ISO VG 46	0.85	46	125	≥230	-	-15	1	√		
Semi-Synthetic Oils	SHL THERM 20S	ISO VG 20	0.86	20	-	≥200	-	-35	1	√	√	√
Synthetic Type Oils	SHL SYN THERM 22L	ISO VG 22	0.87	22	-	≥190	370	-40	1	√	√	√
	SHL SYN THERM 32L	ISO VG 32	0.87	32	-	≥200	462	-35	1	√	√	√

### 05. DẦU TUABIN (Turbin Oils)

Products		Specific gravity	Kinematic viscosity (40°C, cSt)	Viscosity Index	Flash point (°C)	Pour point (°C)	Copper Corrosion (100°C/3hrs)	Anti-oxidation (150°C min)
Turbin Oils	SHL TURBIN 32	0.86	31.8	130	226	-25	1	>1.000
	SHL TURBIN 46	0.85	45.0	134	240	-30	1	>1.000
	SHL TURBIN 68	0.86	65.8	116	256	-32	1	>1.000

## VII. DẦU CÁN (Rolling Oils)

	Products	Specific gravity	Kine-matic viscosity (40°C, cSt)	pH	Flash point (°C)	Pour point (°C)	Distillation (IBP/FBP, °C)	Saponification value	Aluminum	Copper	Sainless Steel	Main customer
Al Cold Rolling Oils	SHL ROLL 30YB	0.77	1.6	-	≥80	-15	220/240	-	√			DONGIL Aluminum
	SHL ROLL 32	0.79	1.8	-	≥80	-20	200/250	-	√			LOTTE Aluminum
	SHL ROLL 34	0.81	2.3	-	≥100	-20	230/260	-	√			DAEHO AL
	SHL ROLL 36	0.81	2.5	-	≥100	-10	240/270	-	√			Novelis Korea
	SHL ROLL 38	0.80	2.9	-	≥110	-10	260/280	-	√			
Al Hot Rolling Oils	SHL ROLL RH 32	0.92	23.0	5.5	-	-	-	-	√			NEWALTEC
	SHL ROLL RH 33	0.92	30.0	5.5	-	-	-	-	√			DAEHO AL
Copper Rolling Oils	SHL ROLL C80P	0.87	8.5	-	≥150	-15	-	-		√		POONGSAN CORPORATION
	SHL ROLL 70P	0.88	7.6	-	≥150	-25	-	-		√	√	SAMSHIN METAL
Satinless Steel Rolling Oils	SHL ROLL GRIND 150S	0.83	15.0	-	≥200	-40	-	-		√	√	
	SHL ROLL S-100F	0.84	7.8	-	≥150	-10	32	32			√	POSCO
	SHL ROLL S-120F	0.84	10.0	-	≥150	-10	28	28			√	Hyundai BNG STEEL



## VIII. DẦU ĐỘNG CƠ (Engine Oil)

### 01. DẦU ĐỘNG CƠ DIESEL (Diesel Engine Oil)

Products		Specific gravity	Kinematic viscosity (100°C, cSt)	Viscosity Index	Flash Point (°C)	Pour Point (°C)	Remark
CI-4	SILK TURBO ROAD 15W40	0.87	14.7	130	≥220	-24	For diesel engines
	SILK TURBO ROAD 20W50	0.87	19.3	124	≥245	-24	
CF-4	SILK JET ROAD 15W40	0.87	14.7	135	≥255	-27	
	SILK JET ROAD 20W50	0.87	19.3	124	≥255	-27	

### 02. DẦU ĐỘNG CƠ CHO XE MÁY (Motorcycles Engine Oil)

Products		Specific gravity	Kinematic viscosity (100°C, cSt)	Viscosity Index	Flash Point (°C)	Pour Point (°C)	Remark
API JASO MA	SHL Eco SN 5W30	0.85	11.41	164	≥ 220	≤ -25	For motor cycle engine
	SHL Eco SL 10W40	0.86	13.61	156	≥ 220	≤ -25	
	SHL Eco SJ 15W40	0.87	13.86	135	≥ 230	≤ -25	
	SHL Eco SJ 20W50	0.87	17.77	128	240	-25	
	SHL Eco SG 20W50	0.87	17.48	125	≥ 240	≤ -25	
API JASO MB	SHL Eco SL 10W40	0.86	13.71	152	≥ 220	≤ -25	



## IX. DẦU CẦU (Transmission Oil)

### 01. DẦU CẦU CHO ĐỘNG CƠ DIESEL (Diesel Transmission Oils)

	Products	Specific gravity	Kinematic viscosity (40°C, cSt)	Viscosity Index	Flash Point (°C)	Pour Point (°C)	Remark
GL-5	SHL MTF 90 V	0.88	170.0	100	≥250	-23	For diesel engines
	SHL MTF 140 V	0.90	310.0	95	≥250	-15	
GL-4	SHL MTF 90 IV	0.88	170.0	99	≥250	-23	
	SHL MTF 140 IV	0.89	310.0	95	≥250	-15	

### 02. DẦU HỘP SỐ XE TAY GA (Scooter Gear Oil)

	Products	Specific gravity	Kinematic viscosity (40°C, cSt)	Viscosity Index	Flash Point (°C)	Pour Point (°C)	Remark
GL-5	SHL SCOOTER GEAR OIL	0.87	141.2	106	≥224	-30	For scooter

## X. DẦU TÁCH KHUÔN (Mold Release Oil)

	Products	Specific gravity	pH	Kinematic viscosity (40°C, cSt)	Toatal Solid (%)
Al Die casting Mold Release	SHL RE 2200H	1.00	8.5	-	20
Concrete Mold Release	SHL LUBRIC M010	0.88	-	129	-
	SHL LUBRIC M020	0.86	-	31	-





Published Date : 2019. 08. 22

Rev.04